

FRIENDS OF EUCLID CREEK

How to build a Native Plant Garden



Pick the Perfect Site



Sims Park, Euclid, Ohio

Lake Erie Shore



**Right in the path of migrating birds and
butterflies**

Get Some Funding & Support

A heartfelt thank you to...

- **Friends of Euclid Creek**
- **Northeast Ohio Regional Sewer District**
- **City of Euclid**
- **Great friends and volunteers!**

Find Garden Designers



Sarah Cech & Barb Holtz

A Bit of Publicity



Coming Soon!

Friends of Euclid Creek
Native Plant Garden



SUNDAY, OCTOBER 6, 9:00 A.M.

Rain Date
Sunday, October 13, 9:00 A.M.

***Come and help us feed all the
birds, bees, and butterflies
their favorite food!***



Bring gloves and garden tools!
For info Linda Beck, [KeepEuclid Beautiful!](mailto:KeepEuclidBeautiful@euclid.com)
lbeck@euclid.com

Get a Future Garden Care Crew

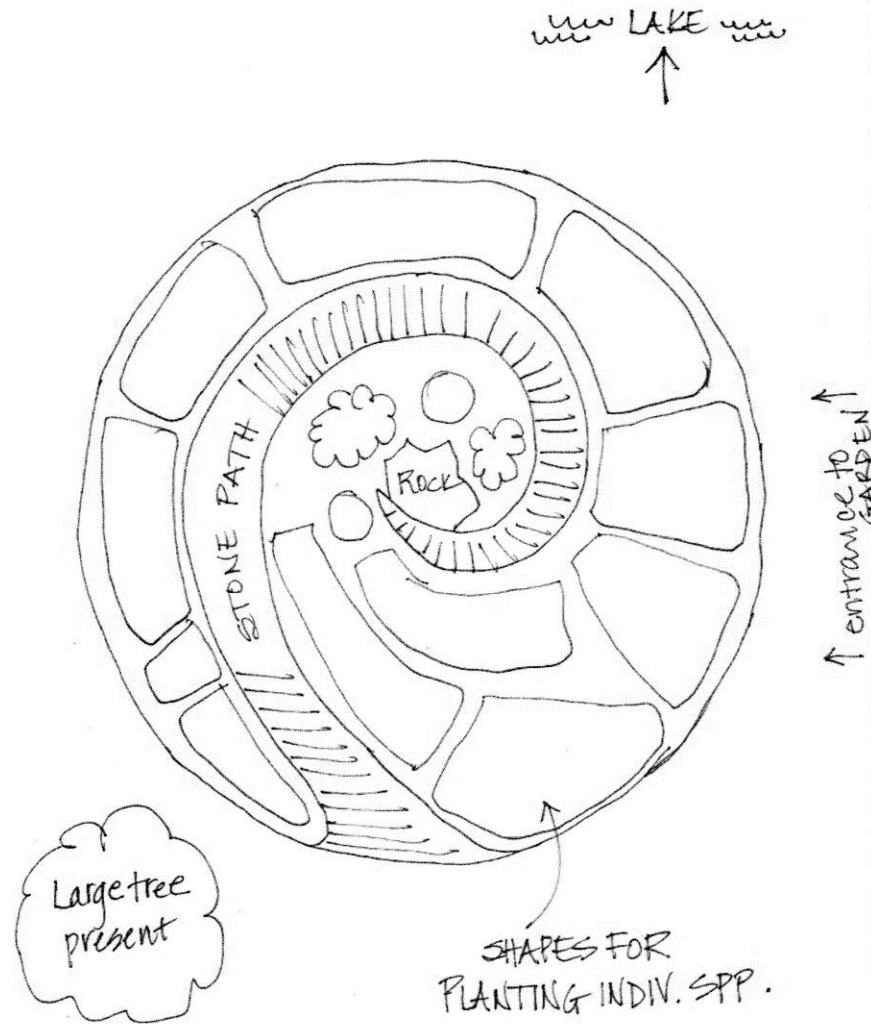


Prepare the Site



**Mulch and fabric off – thank
you to Euclid parks dept.**

The Garden Design



Set up the Design



**Path set with bricks and sand
thanks to “Q” Green, City of Euclid**

The Big Day

100 plants from Avalon Gardens

30 volunteers

4 hours

And lots and lots of rocks!

Get the Plants & Set them Up



Plant Them Properly







Plants All In - Time for Rocks







More Rocks, Please!



Get them, Sort them, Place them





And More Rocks!







Only Some of the Volunteers



Plants In - Path Set - Success!



The End? Not Yet!

What about those pesky deer!



Temporary fence constructed by

Jeannie & Larry Rowe

Deb Kramarz

Chris Vild

Kelly Butauski



Chris Vild

Vice President

Friends of Euclid Creek



Deb Kramarz

is also the
*Garden Care Crew
Leader!*



Now We Wait Till Spring!



Photo by Greg Lawrence,
Lakeshore Coffee House, Euclid