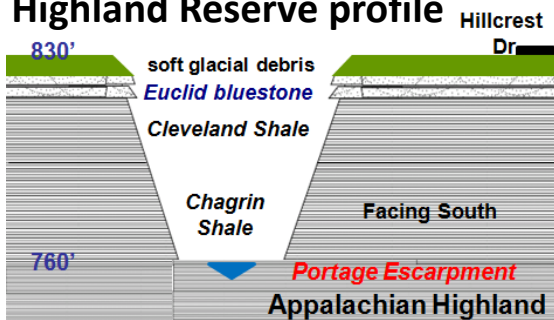


Redstone Run natural context

Highland Reserve profile



The Highland Reserve lies at Redstone Run's Euclid bluestone knick point. At the knick, the stream cuts slowly through the hard bluestone and quickly through the underlying softer shale. The result is a prominent knick point waterfall.

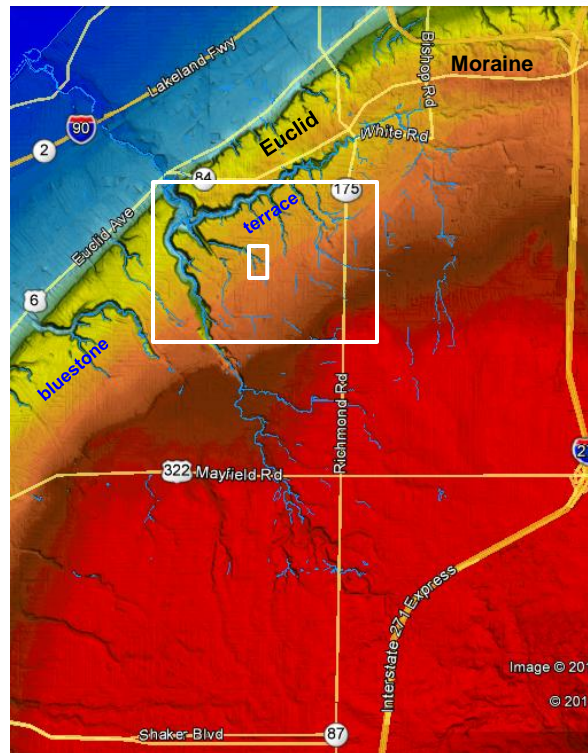
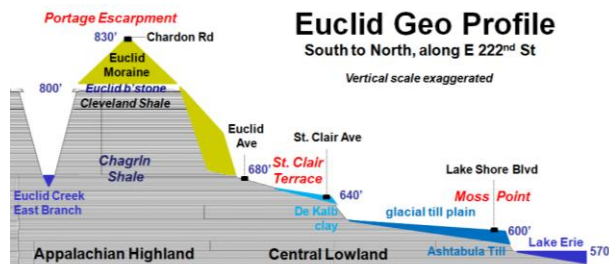
During the last 14,000 years, the waterfall has migrated upstream approximately 1 mi. The actual waterfall lies culverted under Highland Road.



The reserve forest has mixed hardwood species.

Euclid Creek / Portage Escarpment

© 2013 Bluestone Heights



Fourteen thousand years ago, the last glacier, in retreat, generated many streams along the Portage Escarpment. In the interim, Euclid Creek has been carving a new watershed between the larger pre-glacial Cuyahoga and Chagrin valleys.

The main branch begins in high on the escarpment to flow northward. The east branch gathers headwaters forced westward along the Euclid Moraine.

Each branch falls over the Euclid bluestone to create a gorge in the underlying Cleveland and Chagrin Shales.

The Highland Reserve lies where Redstone Run falls over the bluestone to create its own small shale gorge.

Redstone Run Highland Reserve

Friends of Euclid Creek



Looking north to Highland Rd

In May 2013, the Friends of Euclid Creek bought 8.71 acres of woodland just north of Highland Rd.

The parcel straddles Redstone Run for distance of a thousand feet, south to north. The run is unique in coursing from the "redstone" terrace to the confluence of Euclid Creek's main & east branches.

The parcel lies on the point at which Redstone Run cuts through the hard bluestone terrace to create a small gorge in the soft shale below.

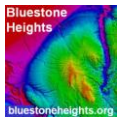
In the early 1800s, Redstone Run was dammed here to provide water power for an early settler saw mill.

The Highland Reserve will be held open to the public for the appreciation of a distinctive place in the Euclid Creek watershed.



Bluestone
Heights

Friends of Euclid Creek



© 2013
Bluestone Heights

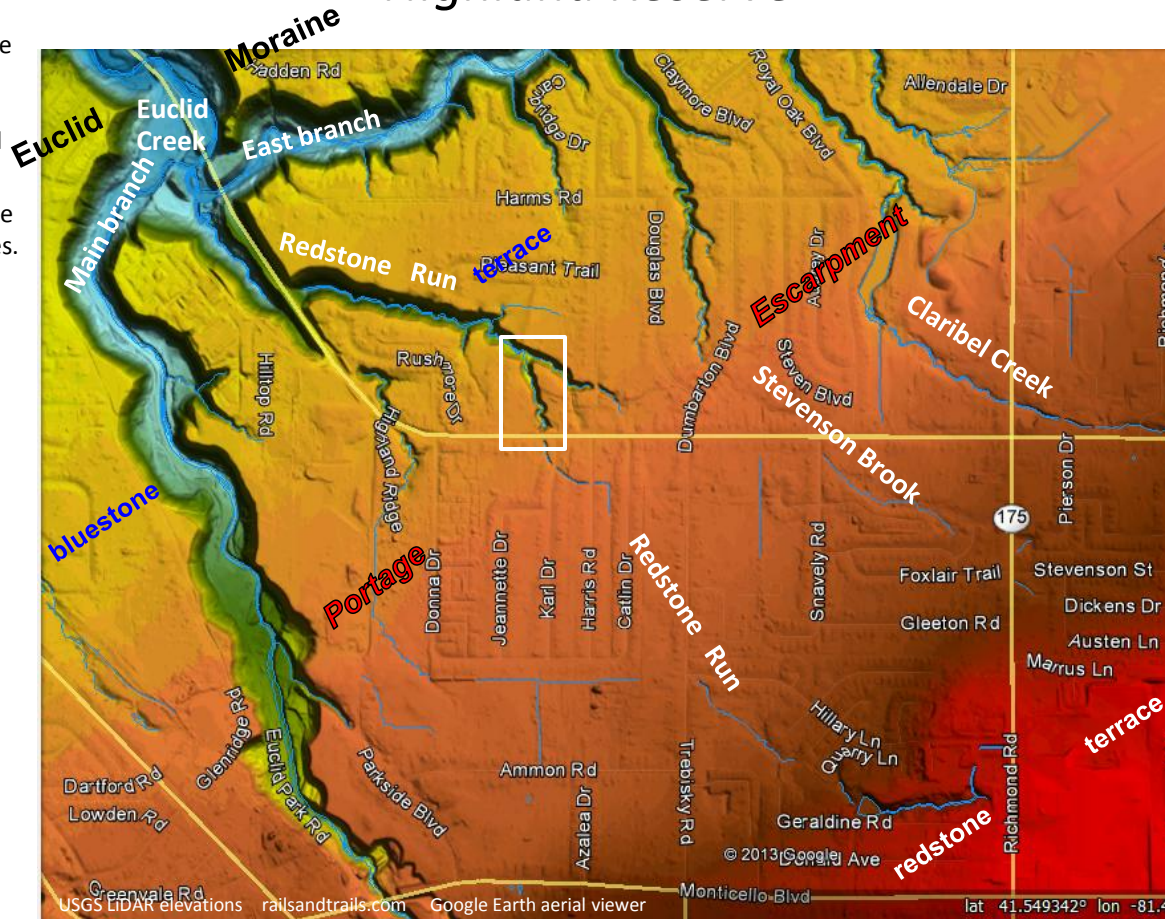
Redstone Run Highland Reserve

For a short time, 14,000 years ago, the retreating glacial ice deposited the Euclid Moraine. This feature diverted local north-flowing streams westward to form Euclid Creek's east branch.

Redstone Run drains to the confluence of Euclid Creek's main & east branches.



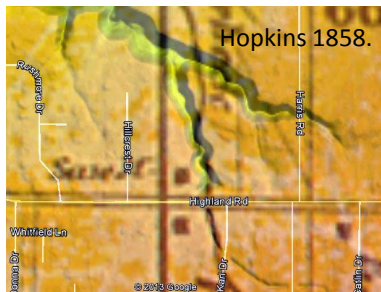
Redstone Highland Reserve. Google Earth aerial on USGS LiDAR substrate



Redstone Run Portage Escarpment segment

Redstone building foundations survive along Richmond and Highland Rds

Redstone Run headwaters lie in an outcrop of Berea Sandstone, just west of Richmond and north of Monticello Roads. The outcrop rock has a relatively high iron content. Building stone quarried here has a pinkish color, hence the name "redstone."



Hopkins 1858.

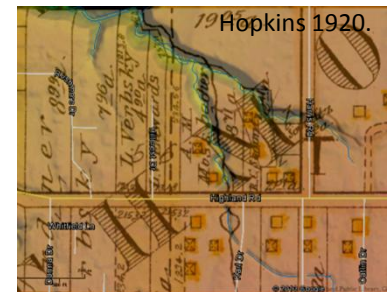
In 1858, a saw mill stood on the reserve parcel. The mill took advantage of the bluestone knick point to provide power. Highland Rd probably served as a means to dam the stream.



Mueller 1898.

In 1898 (left) the cartographer misplaced the course of Redstone Run's main headwater.

In 1920 (right). A pond is indicated immediately upstream from Highland Rd. This was probably remnant of the original mill point.



Hopkins 1920.